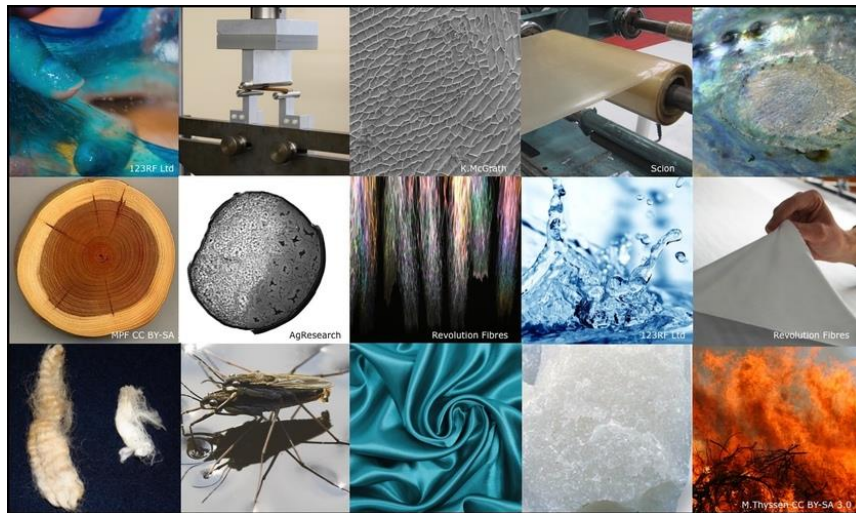


Year 2 – Cheddington Combined School

Spring Term Newsletter

Japan – The World Wars – Everyday Materials



Culture – Cracking Codes – Fair Testing

Welcome back after the Christmas break, we have a busy and exciting term planned...

The main themes that will be running through all areas of our work this term include:

- An investigation into Japan and its culture, as well as a look at life on the Isle of Coll.
- The World Wars, including a look at the local history of Bletchley Park.
- An investigation into everyday materials, looking at their inventors, properties, and how we can change materials for particular uses.

English

We will continue to read and discuss a wide variety and genres of texts, to inspire our writing across the term. Some areas of work include: reading of Traditional Tales from other countries, including Japan, before writing our own traditional story; a look at the Katie Morag stories by the author Mairi Bedderwick; newspaper writing to inform and letter writing. We will be developing skills in planning, writing, editing and correcting our work.

We will be further developing our English skills in spelling, punctuation and grammar, as well as extending our vocabulary and comprehension skills across a wide variety of non-fiction and fictional and poetry texts, including: prediction, retrieving, summarising and inference.

Maths

This term in maths we will be looking at:

- Multiplication and Division: adding equal groups, using the x and \div symbols in multiplication and division sentences; recognising and explaining odd and even numbers; recalling and using 2, 5, 10 times tables including dividing by 2, 5, 10; problem solving with multiplication and division.
- Statistics: making tally charts, drawing and interpreting pictograms and block diagrams.
- Geometry: Recognising, drawing, sorting and making patterns with 2D and 3D shapes.
- Fractions: working with parts and wholes; finding and recognising one half, one quarter, two quarters, three quarters, one third, two thirds; explaining unit and non-unit fractions; finding the equivalence of a half and two quarters; counting in fractions; problem solving with fractions.

Science

This term in science we will be investigating everyday materials. We will be looking at identifying different materials, their properties, usage, how and why they were developed and how they can be changed. We will be establishing what a "Fair Test" is and undertaking "Fair Test" enquiries, including finding out which materials make good insulators, why and if/how you can change materials by heating, freezing, bending, squashing, stretching.

Geography

This term we will be comparing the physical and human features of the islands that make up Japan to the Isle of Coll in the UK to identify similarities and/or differences. We will be further developing our use of maps, atlases and globes to establish some basic facts for both regions.

History

In the first half of Spring term we will be investigating and comparing Medieval English Knights to Japanese Samurai warriors. In the second half of term we will be looking at the World Wars. We will be finding out about when they took place, how they started, some of the battles that were fought on land, sea and air, as well as what life was like on the home front. We will be particularly researching what it was like for children in the World Wars and the personal stories of evacuees as well as looking into the crucial work that was carried at Bletchley Park during World War Two.

Art

This term in art we will be developing our skills in painting, looking at the work of Kandinsky and Anthony Frost. We will be using music and stories to inspire our art. We will also be exploring 3D sculpture, looking at the work of Aboriginal artists and using clay to create patterns and designs.

PE

This term in PE the children will be starting with winter themed dance, moving in time to music, and gymnastics, showing control when using different rolls and jumps. Following this we will be doing a jungle themed dance and indoor tennis. We would like to remind you that during PE, for safety reasons, long hair should be tied back and ear-rings should not be worn. However, if your child cannot remove their own ear-rings, please supply tape to cover them up. I would also recommend that girls keep a pair of socks in their PE kits in case they are wearing tights.

RE

The topics for this term are Special Places, followed by Special Occasions. This will include the children investigating what is special to them and why, as well as exploring what makes some places special to particular religions of Christianity and Judaism.

Computing

The children will use floor robots to develop an understanding of instructions in sequences and the use of logical reasoning to predict outcomes. They will use given commands in different orders to investigate how the order affects the outcome; learn about design in programming; develop artwork and test it for use in a program; design algorithms and then test those algorithms as programs and debug them. After half term the children will be using the j2e pictogram tool to understand what the term data means and how data can be collected in the form of a tally chart. They will learn the term 'attribute' and use this to help them organise data, present data in the form of pictograms and finally block diagrams then use the data presented to answer questions.

Homework

This will continue to be set on a Thursday for the following Tuesday. Your child should read at least 5 times a week to an adult for 5 minutes and spend 5 minutes practising spellings. Please sign your child's diary each week to show that you know that your child has completed the homework. Please let me know immediately if there are any problems regarding the homework, or any other matter, so that we can try to solve any problems before they become too big!

How you can help your child.

- Please ensure that your child's belongings are labelled.
- Ensure that your child has their correct equipment required in school: water bottle, reading book, home school record book, PE kit.
- Any monies brought into school at any time should be in a clearly labelled, named envelope.
- Please support and encourage your child with their homework and sign their homework diaries once a week.
- Listen to your child read and test them on their number bonds/tables and spellings each week.

VLE

Please make sure you log on each week to the VLE (passwords are in your child's diary). The site is updated each week with links to topic sites, information on our learning in class, news of activities and photos/videos of our work. Your child can message others in their class too. Could I ask that you continue to contact me with queries either via the homework diary or school office (children please keep sending me your updates!).

I look forward to working with you again closely this term. Thank you for your support.

Mrs Hopper – Year 2 Class Teacher